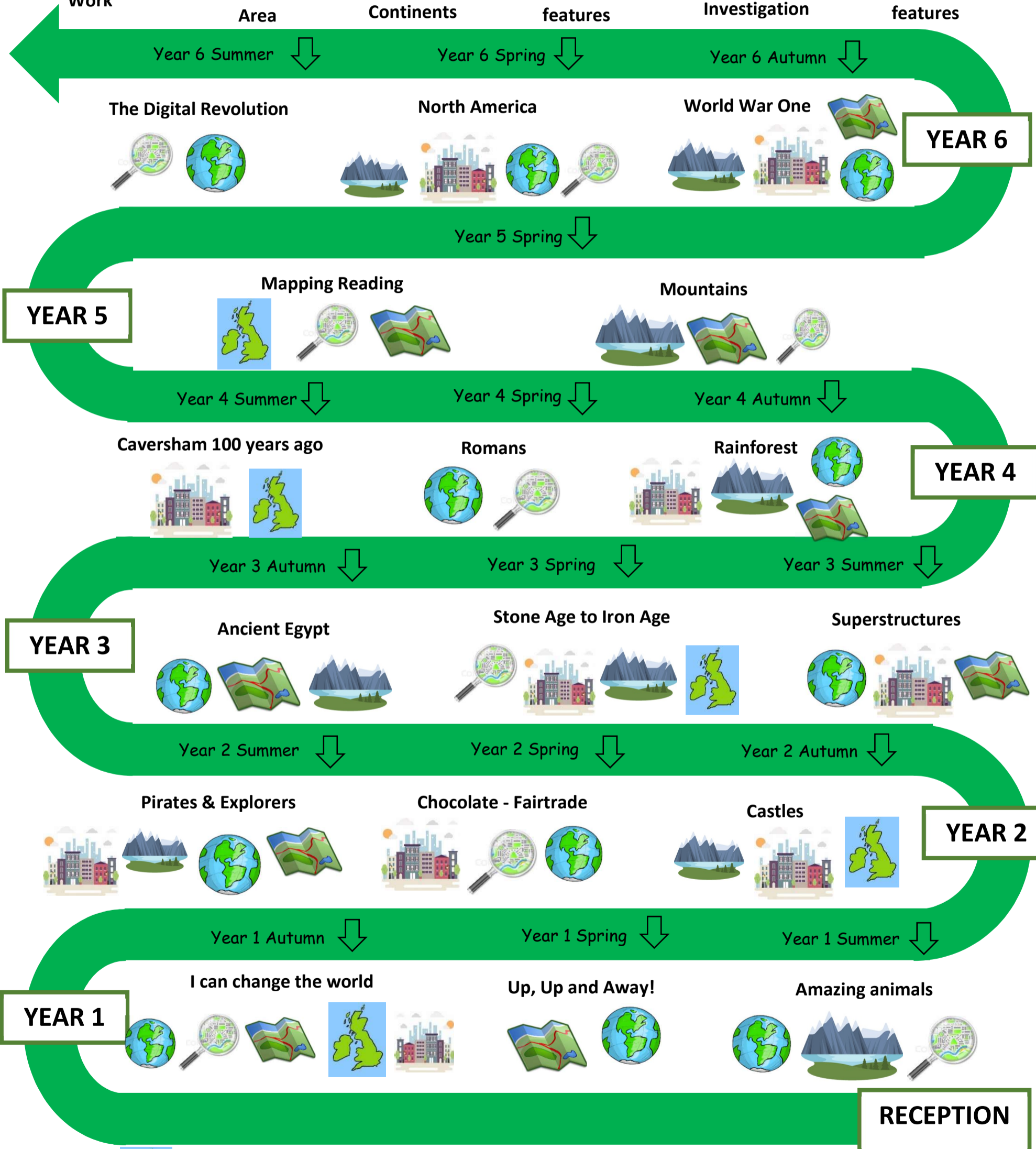
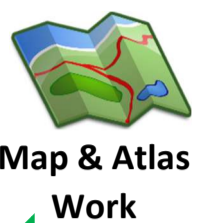




THE HEIGHTS PRIMARY: GEOGRAPHY WHOLE SCHOOL OVERVIEW

Geographical concepts



Year 6 Summer ↓

Year 6 Spring ↓

Year 6 Autumn ↓

The Digital Revolution



North America



World War One



YEAR 6

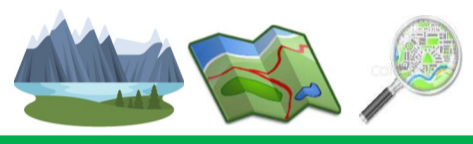
Year 5 Spring ↓

YEAR 5

Mapping Reading



Mountains

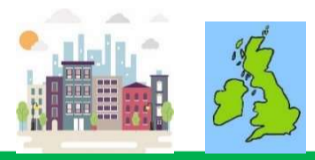


Year 4 Summer ↓

Year 4 Spring ↓

Year 4 Autumn ↓

Caversham 100 years ago



Romans



Rainforest



YEAR 4

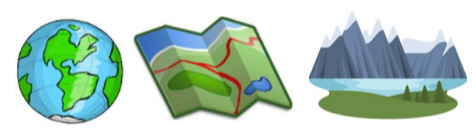
Year 3 Autumn ↓

Year 3 Spring ↓

Year 3 Summer ↓

YEAR 3

Ancient Egypt



Stone Age to Iron Age



Superstructures



Year 2 Summer ↓

Year 2 Spring ↓

Year 2 Autumn ↓

Pirates & Explorers



Chocolate - Fairtrade



Castles



YEAR 2

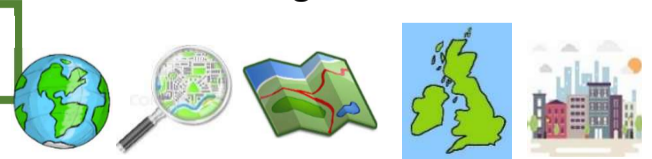
Year 1 Autumn ↓

Year 1 Spring ↓

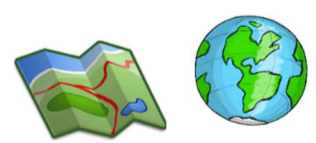
Year 1 Summer ↓

YEAR 1

I can change the world



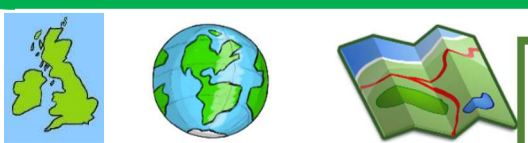
Up, Up and Away!



Amazing animals



RECEPTION



ELG: People, Culture and Communities

Children at expected level of development will: - describe their immediate environment using knowledge from observation, discussion, stories, non-fiction texts and maps - explain some similarities and differences between life in this country and life in other countries